

# La petite chapelloise

tab GC dvdp 06-2015

trad du Morvan

GC=C

org gc C

$\text{♩} = 160$

C G G C G G C



(6) (7) (7) 8 7 (6) 7 (5) (6) (7) (7) 8 7 (6) (6)  
= = = = =

5

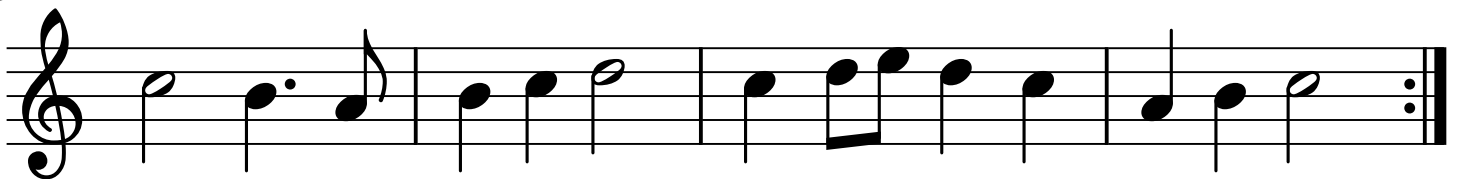
C G G C G G



(6) (6) 7 (6) 8 (7) (6) 8 (7) (7) 8 7 (6) 7 (5)  
= = = = =

9

C G C G G C



(6) 7 (5) (6) 8 (7) (6) 8 (7) (7) 8 7 (6) (6)  
= = = = = = =